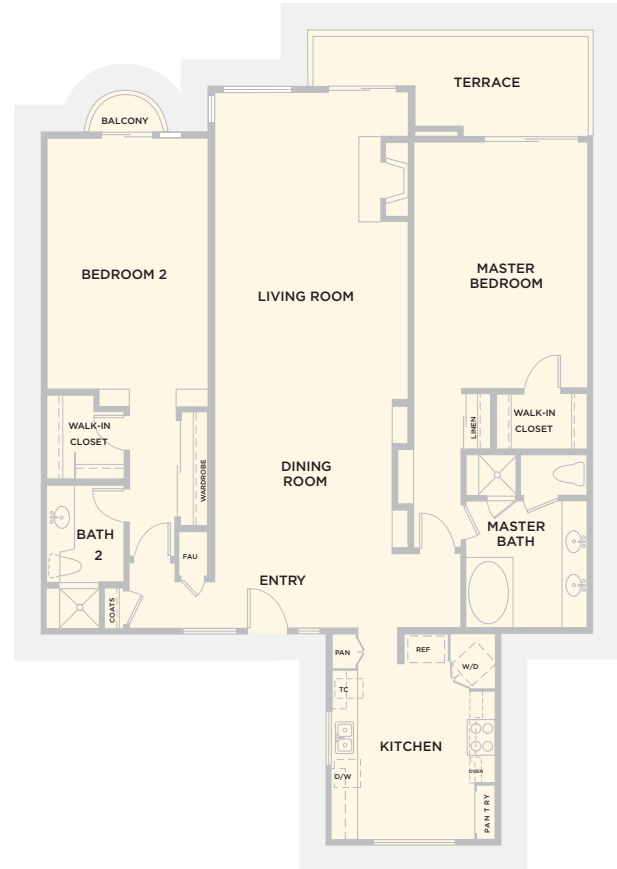
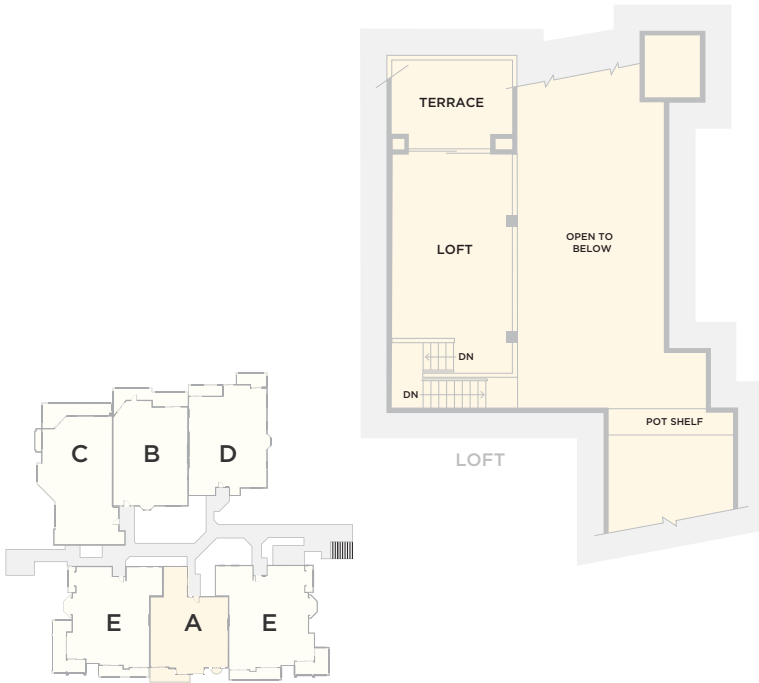


UNIT A

Two Bedrooms | Two Baths

Approximately 1,577 s.f.
Balcony/Terrace 130 to 960 s.f.

[Click here to download PDF...](#)

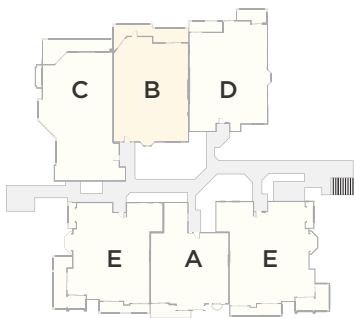


UNIT A *with Loft*

Two Bedrooms | Two Baths

Approximately 1,884 s.f.
Balcony/Terrace 229 to 247 s.f.

[Click here to download PDF...](#)



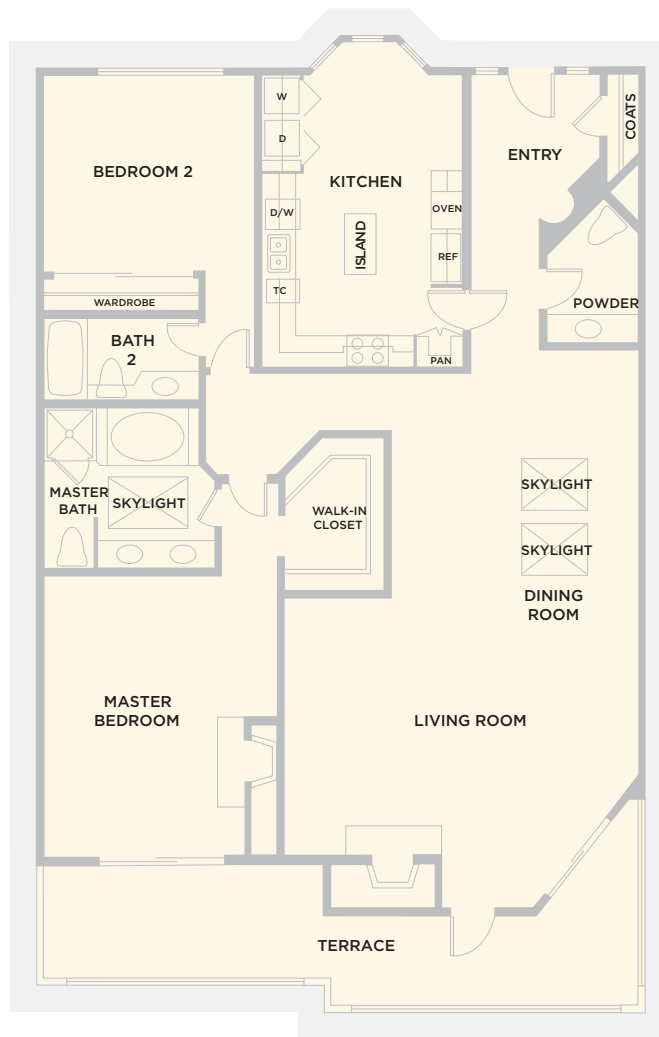
UNIT B

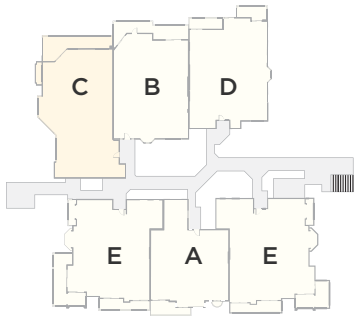
Two Bedrooms | Two & ½ Baths

Approximately 1,828 s.f.

Balcony/Terrace 252 to 262 s.f.

[Click here to download PDF...](#)



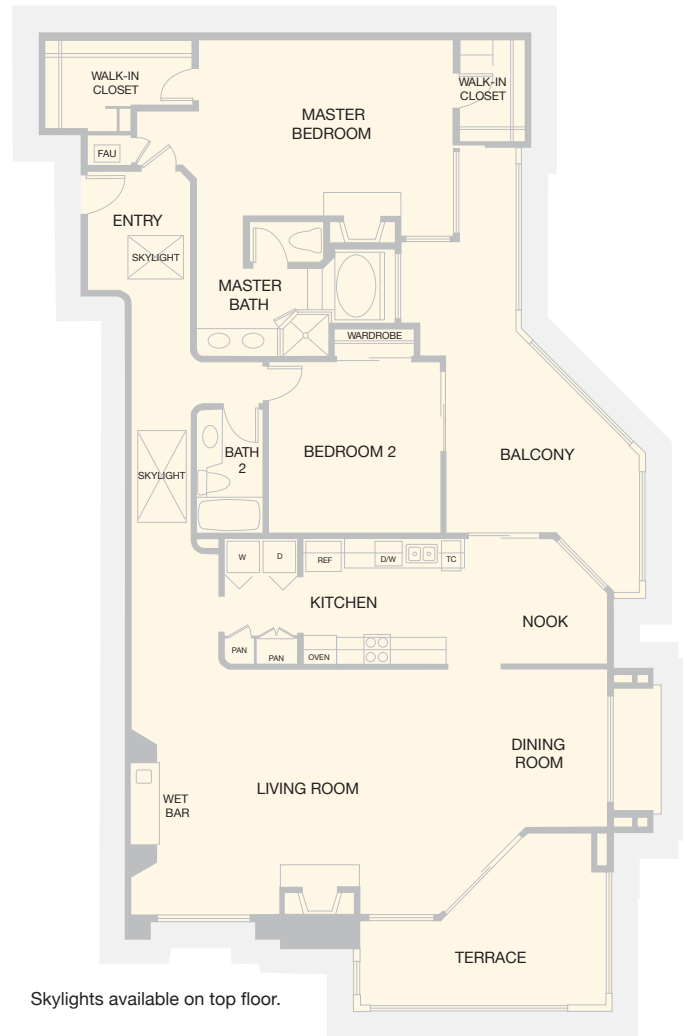


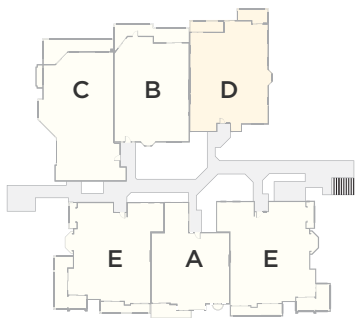
UNIT C

Two Bedrooms | Two Baths

Approximately 1,880 s.f.
Balcony/Terrace 460 to 658 s.f.

[Click here to download PDF...](#)



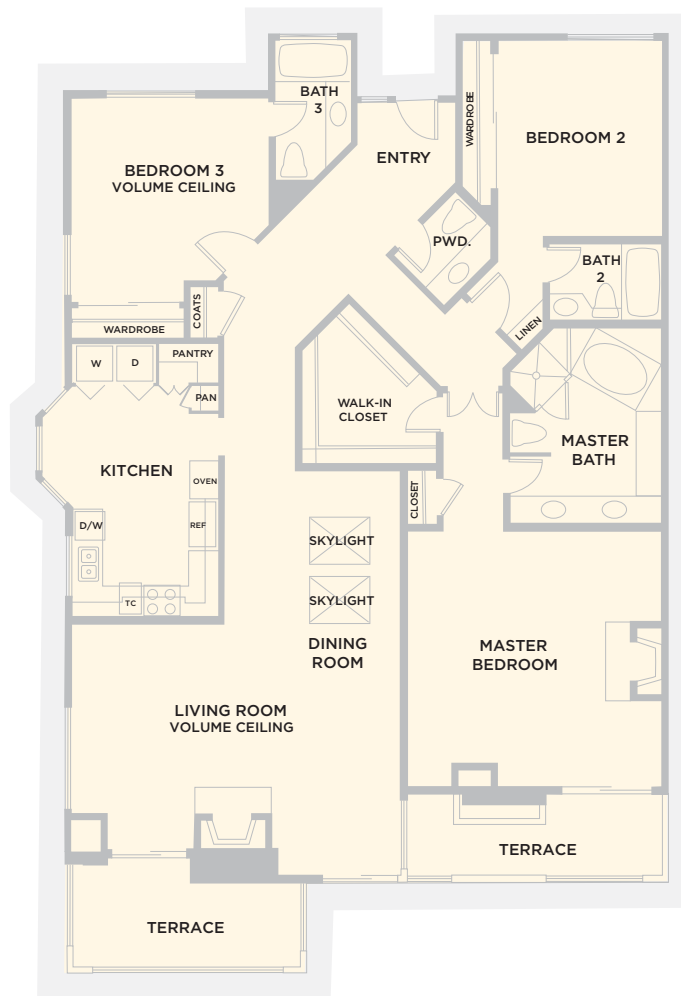


UNIT D

Three Bedrooms | Three & ½ Baths

Approximately 1,981s.f.
Balcony/Terrace 197 to 272 s.f.

[Click here to download PDF...](#)





UNIT E

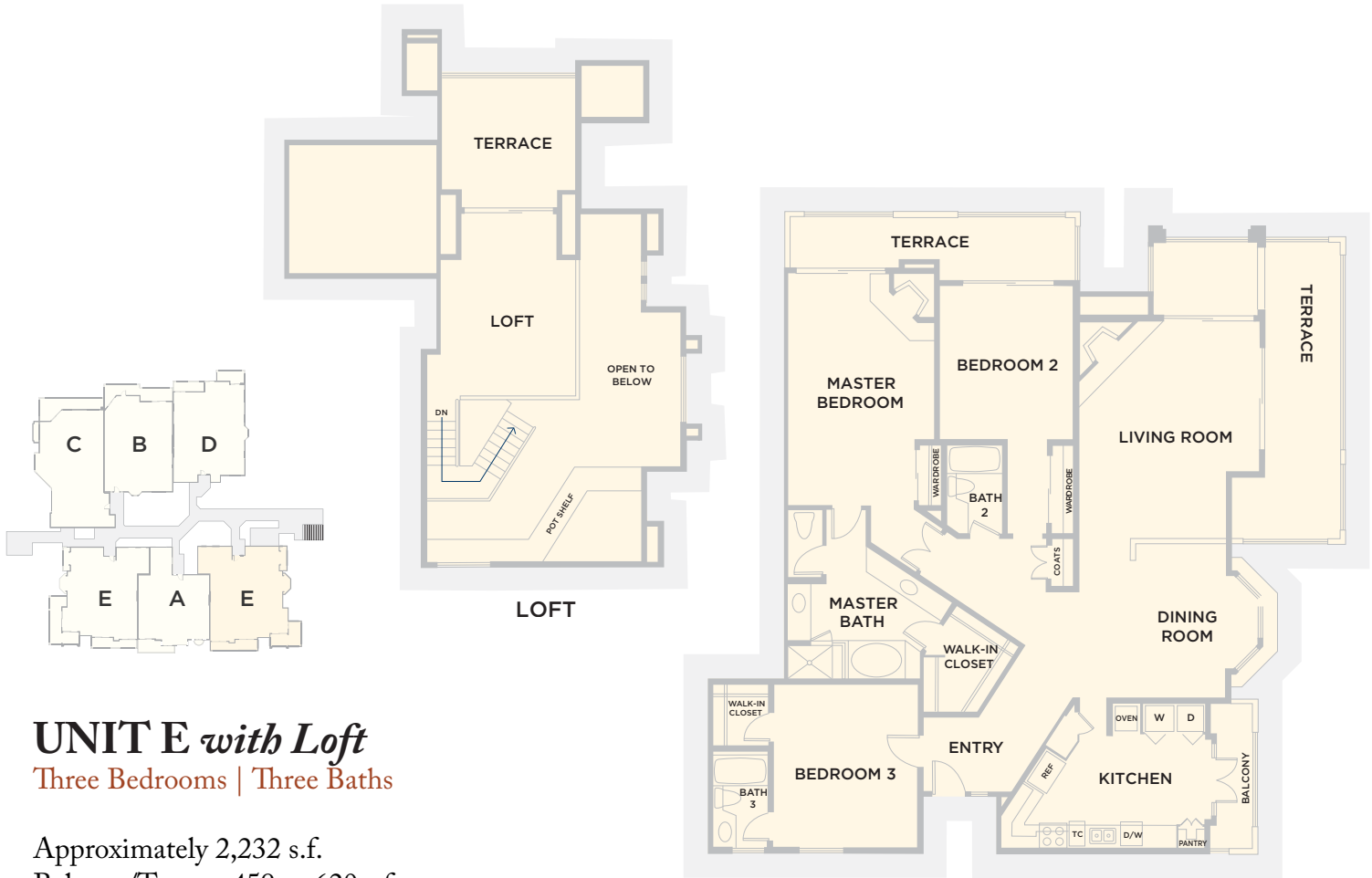
Three Bedrooms | Three Baths

Approximately 2,057 s.f.

Balcony/Terrace 314 to 1,228 s.f.

[Click here to download PDF...](#)



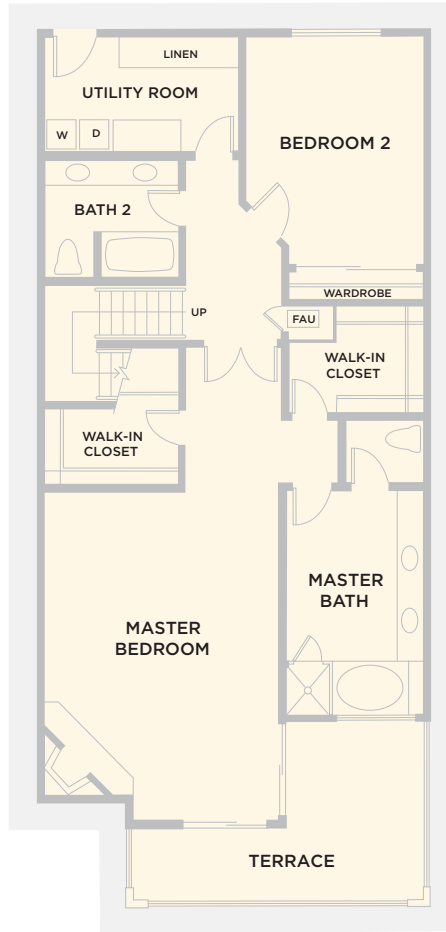


UNIT E *with Loft*

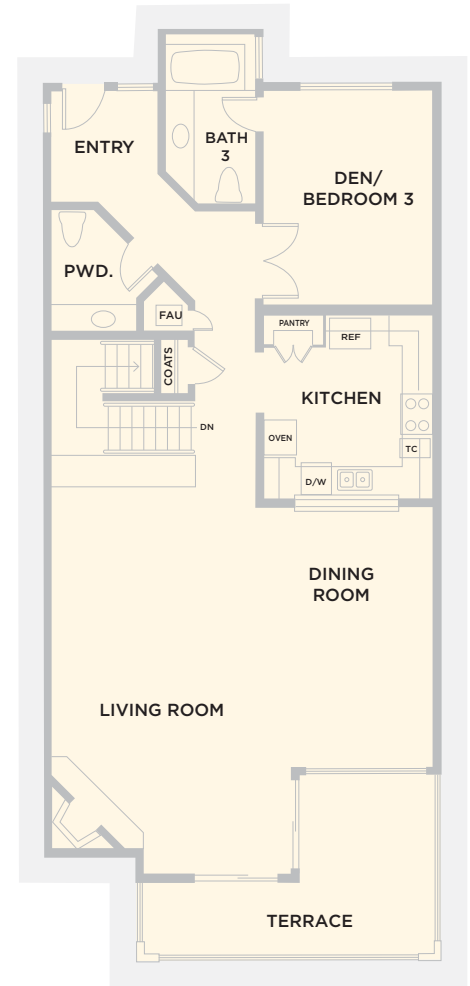
Three Bedrooms | Three Baths

Approximately 2,232 s.f.
Balcony/Terrace 459 to 620 s.f.

[Click here to download PDF...](#)



FIRST FLOOR



SECOND FLOOR

UNIT F *with Den*

Two Bedrooms | Three ½ Baths
(Or Three Bedrooms)

Approximately 2,190 s.f.

Balcony/Terrace 229 s.f.

Click here to download PDF...